

Laudes – Salmódia

Ant. 1 AO



Eu Vos in - vo - co, Se - nhor, pe - la ma -
nhã, e ou - vis a mi - nha voz.

Detailed description: This block contains the first antiphonal verse. It features a treble clef, a key signature of three flats (B-flat, E-flat, A-flat), and a 2/4 time signature. The melody is written on a single staff with lyrics underneath. The lyrics are: "Eu Vos in - vo - co, Se - nhor, pe - la ma - nhã, e ou - vis a mi - nha voz." The piece concludes with a double bar line.

Salmo 5



Detailed description: This block contains the musical notation for Psalm 5. It consists of two staves of music in the same key signature and time signature as the antiphonal verse. The melody is simple and contemplative, with lyrics written below the notes.


Ant. 2 AO



Ce - le - bra - mos, Se - nhor, a
gló - ria do vos - so no - me.

Detailed description: This block contains the second antiphonal verse. It features a treble clef, a key signature of three flats, and a 2/4 time signature. The melody is written on a single staff with lyrics underneath. The lyrics are: "Ce - le - bra - mos, Se - nhor, a gló - ria do vos - so no - me." The piece concludes with a double bar line.

Cântico (Cron)



Detailed description: This block contains the musical notation for the Cântico (Cron). It consists of two staves of music in the same key signature and time signature. The melody is simple and contemplative, with lyrics written below the notes.

Ant. 3 AO



A - do - rai o Se - nhor no seu tem - plo san - to.

Detailed description: This block contains the third antiphonal verse. It features a treble clef, a key signature of three flats, and a 2/4 time signature. The melody is written on a single staff with lyrics underneath. The lyrics are: "A - do - rai o Se - nhor no seu tem - plo san - to." The piece concludes with a double bar line.

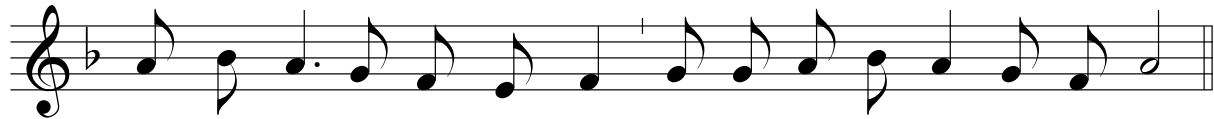
Salmo 28



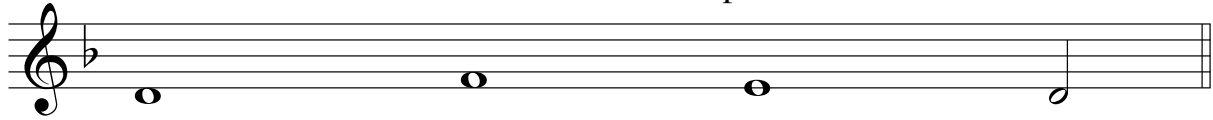
Detailed description: This block contains the musical notation for Psalm 28. It consists of two staves of music in the same key signature and time signature. The melody is simple and contemplative, with lyrics written below the notes.

Responsório breve

AO



So - bre ti, Je - ru - sa - lém, a - pa - re - ce - rá o Se - nhor.



Sobre ti brilha - rá a sua glória.
Glória ao Pai e ao Filho e ao Es - pírito Santo.

Cântico evangélico

AO



Le - van - ta os teus o - lhos, Je - ru - sa -



lém, e con - tem - pla o po - der do teu Rei, o



Sal - va - dor que vem pa - ra te li - ber - tar.



Preces

AO



Vin - de, Se - nhor Je - sus.