

Responsorio I

Maestros

L. Persei, op. 14

Handwritten musical notation for the first system. It features a vocal line on a treble clef staff and a piano accompaniment on a bass clef staff. The key signature has one sharp (F#) and the time signature is common time (C). The lyrics are: "Ho-di-e no-bis coe-lum rex de Virgine mar-".

Handwritten musical notation for the second system, consisting of piano accompaniment on two staves (treble and bass clefs). The notation includes various chords and melodic lines. The lyrics "ei di-gna-tus est" are written below the first staff.

Handwritten musical notation for the third system. It features a vocal line on a treble clef staff and a piano accompaniment on a bass clef staff. The lyrics are: "ei di-gna-tus est" and "ut ho-minem per-ditum ad coe-li-st".

Handwritten musical notation for the fourth system, consisting of piano accompaniment on two staves (treble and bass clefs). The notation includes various chords and melodic lines.

Allegretto.

Gaudete exsultate in angelis

a regna revocatis retro

Allegretto

rall. alquanto

lo... rum qui a sa-hyactis na-hu-

rall. alquanto

Finis Adagio

mano gene-ri ap-pa- - - - - re-rit. p glori-

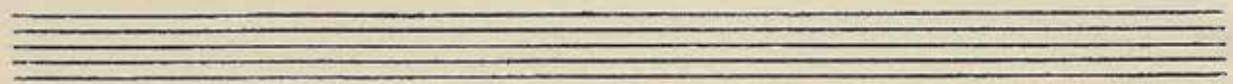
Adagio
glo-ri-a in ex-

rall.

a in ex-cel-sis De- -

cel-sis De- o.

let in-ter-ra base ho-mi-ni-



Allegretto

b'ona voluntate - - tis. *Gardete vos, citius Aufe-*

- lites b'ona voluntate - tis

Allegretto

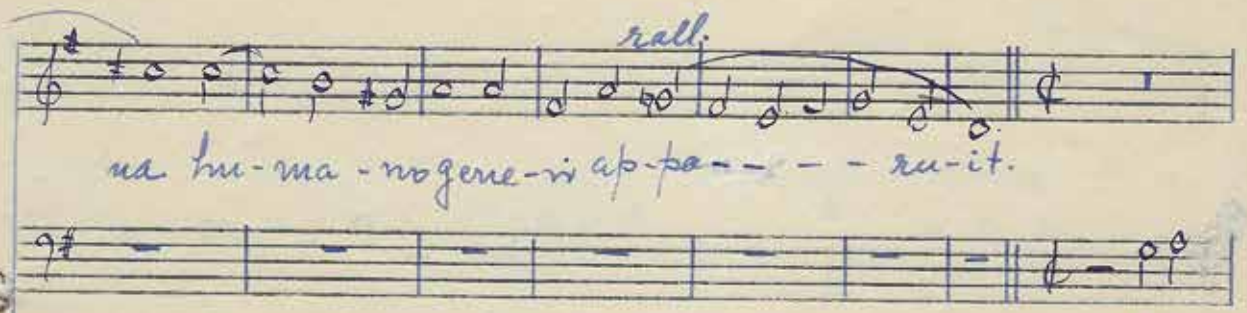
rall.

P *rall. all.* *rum. qui - a sa lus actus -*

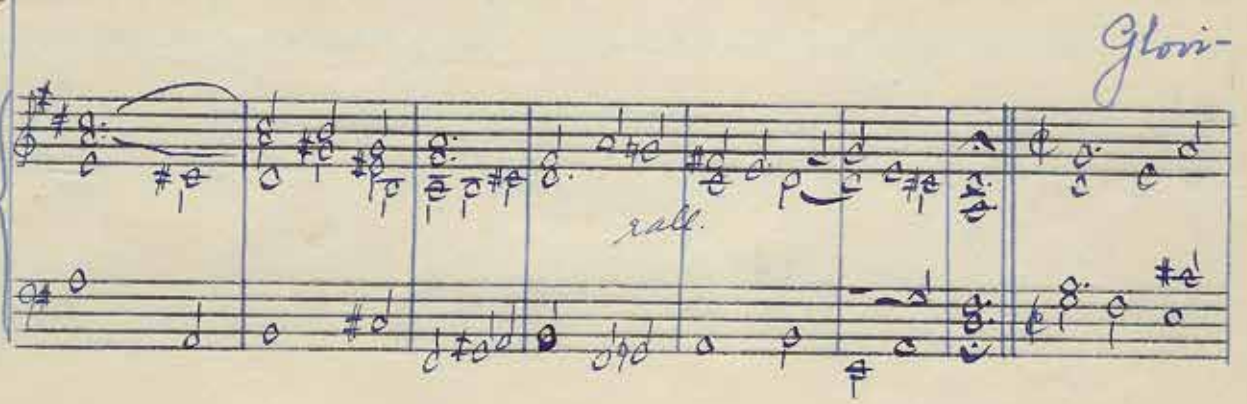
rall. alquanto

Handwritten signature

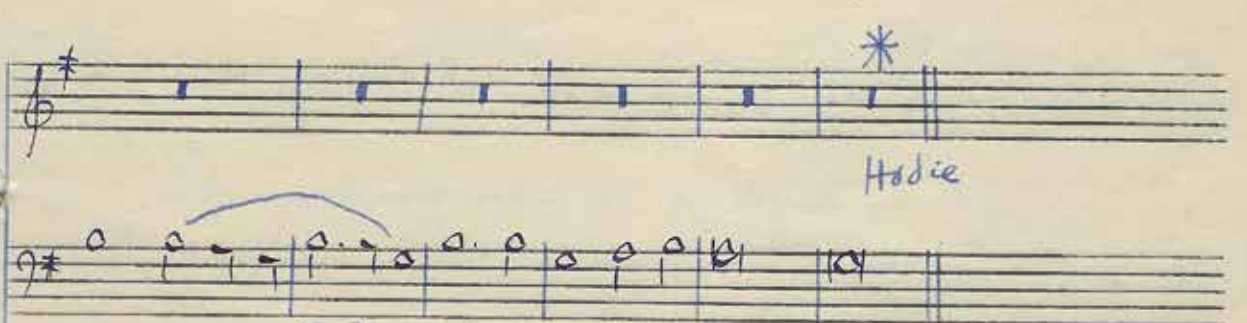
rall.
na hu-ma-ni-ge-ne-ri ap-pe-ru-it.



Glori-
rall.



Hodie

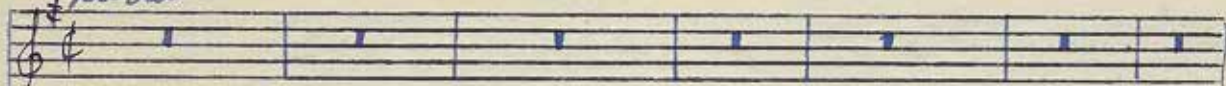


a Pa-tri et Fi-li-o et Spi-ri-tu-i San-cto.

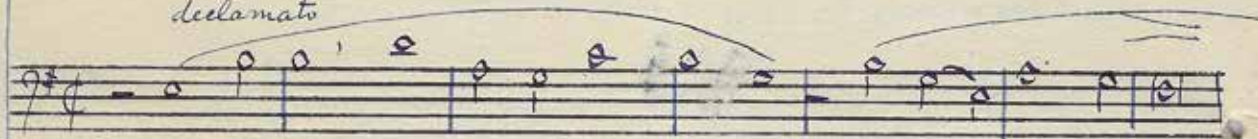


Requies II

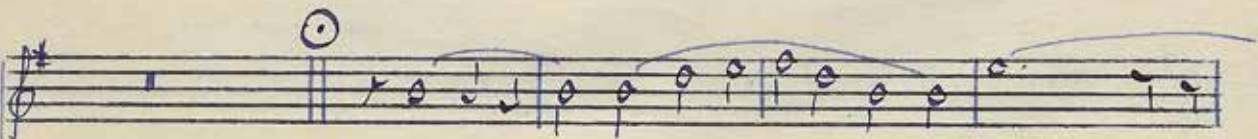
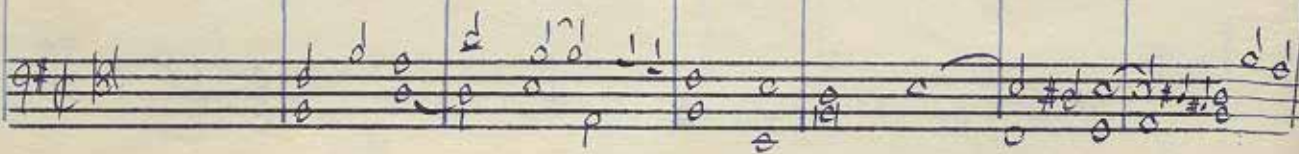
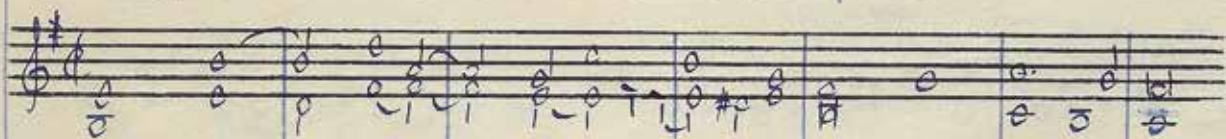
Andante



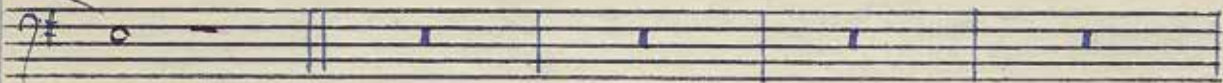
declamato



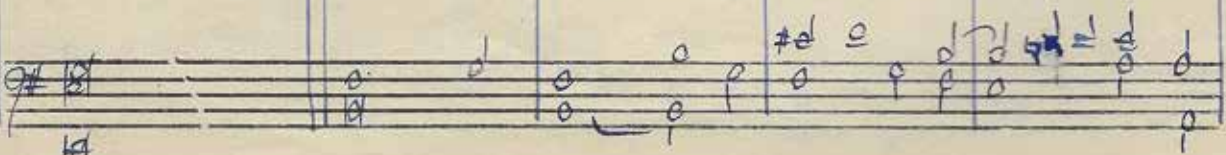
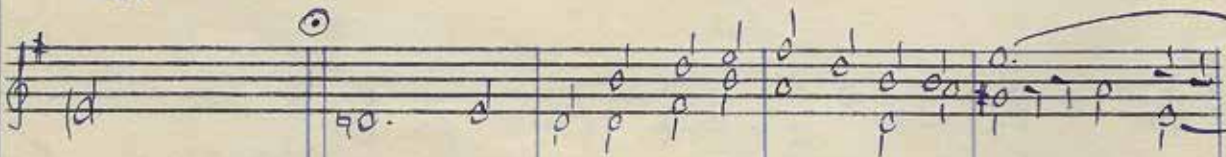
Ho-di-e mi-tis de cre - to pas-se-re ra-de-sem-

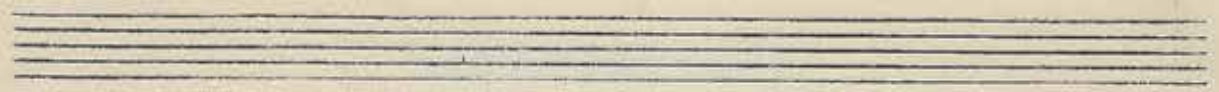


Ho-di-e per totum mundum meli' - -



dit





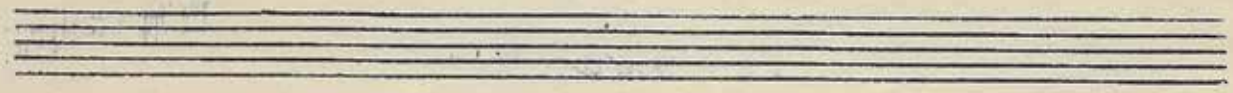
----- plu-i, facti sunt coeli facti sunt coeli

rall *Finis*

rall

mf

Hodie et luxit nobis dies



mf

redemptio-nis no-vae, re-pa-ra-ti-o-nis anti-quae fe-

rall. molto

rall. molto

Hodie per-

licita-tis ae-ter-nae.

rall. molto

Resp. III

Resp. III

Dolce

Quem vidisti facturum? dice-te a multi-tu te no-bis in

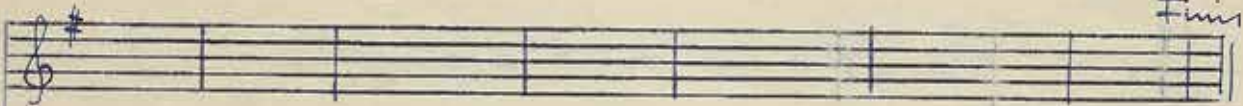
Dolce

rall. *Tempo I*

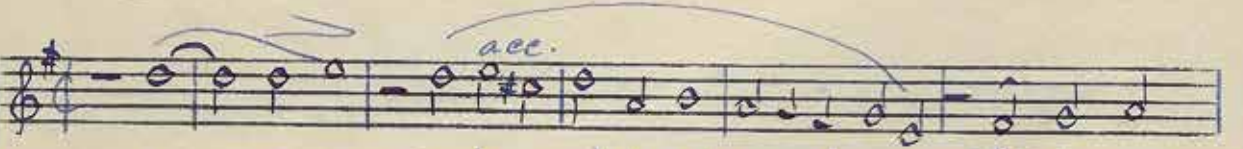
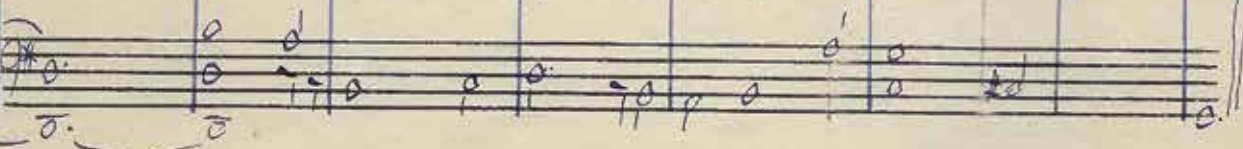
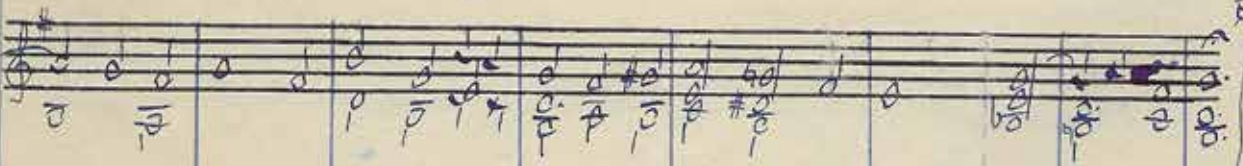
terris qui appa-re-rit.

rall. *Tempo I*

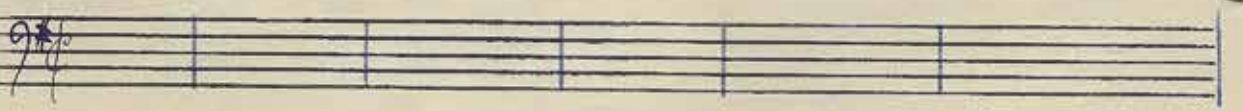
Na-tum



vi-di-mus, et Chorus Ange-Porum collaudant, Do - - - - - mmmmm



Di-ci-ti quidnam vidisti, et annuntia-te chris-ti na-



Antonín Dvořák

Handwritten musical score for the first system. The top staff is a vocal line in G major (one sharp) and 4/4 time. It begins with a *rall.* marking and a long note for the word "ti-vi-ta-tem." followed by "Naturn vidimus glori-a Patris et". A circled "C" is written above the staff. The bottom staff is a piano accompaniment line with chords and some melodic fragments.

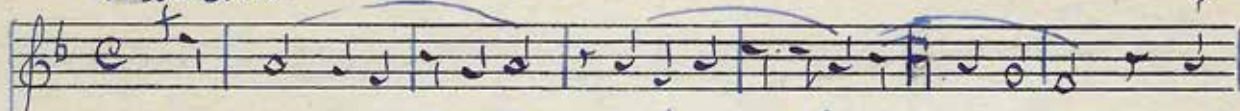
Handwritten musical score for the second system. The top staff is a vocal line in G major and 4/4 time. It begins with a *rall.* marking and a long note for the word "Fi-lis et Spi-ri-tu-i San-cto Naturn vidimus". A circled "C" is written above the staff. The bottom staff is a piano accompaniment line with chords and some melodic fragments.

Handwritten musical score for the third system. The top staff is a vocal line in G major and 4/4 time. It begins with a *rall.* marking and a long note for the word "Fi-lis et Spi-ri-tu-i San-cto Naturn vidimus". A circled "C" is written above the staff. The bottom staff is a piano accompaniment line with chords and some melodic fragments.

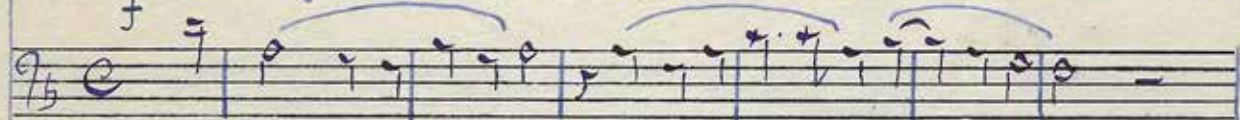
Handwritten musical score for the fourth system. This system consists of a piano accompaniment line with chords and some melodic fragments. A circled "C" is written above the staff.

Responso IV

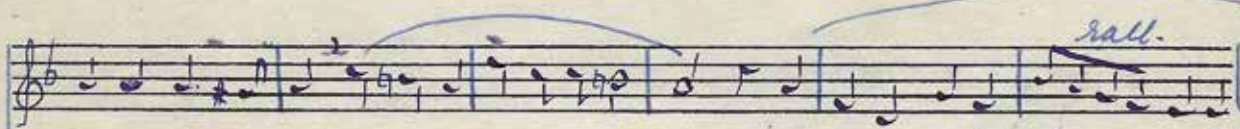
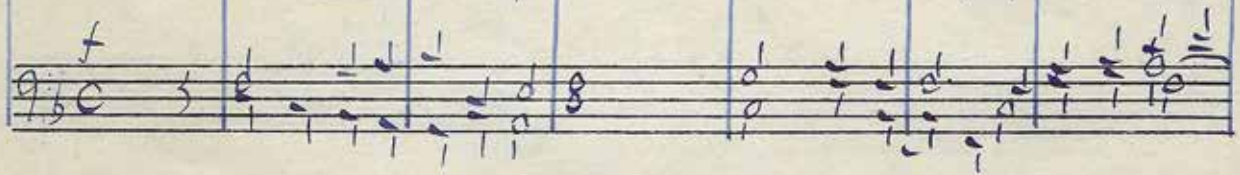
Maestros



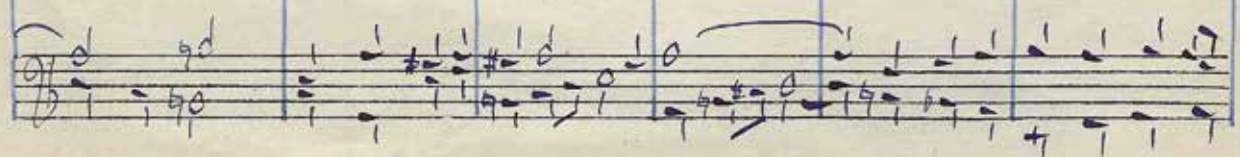
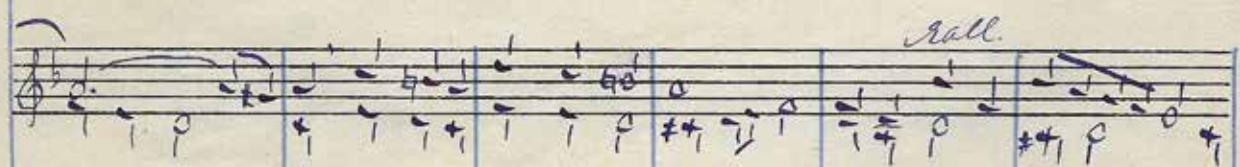
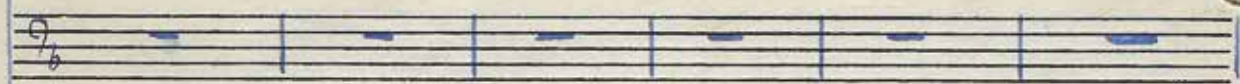
o magnamysterium et admirabile sa-cramentum ut



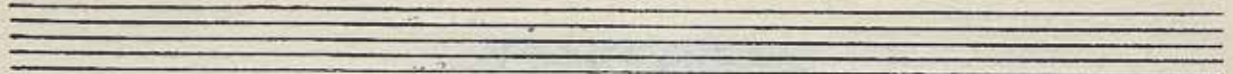
o magnamyste-rium et admi-rabi-lia-sa-cramentum



a-mi-a-ri-a vi-derit ^{na-tum} Domini-um jacentem in pra-ri- - - - ri-



Antonio Vivaldi



Bea- ta Virgo in ju- ni- scera men- tu- erunt portare Dominum chi-

Finis

Aue Maria gratia plena Dominus te - - cum *Beata Virgo*

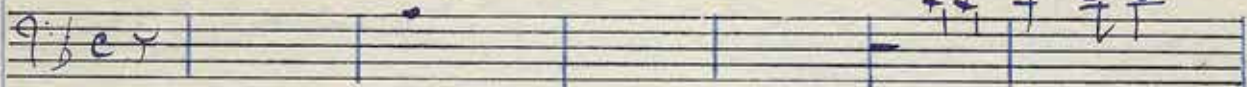
Finis

Responsorio V

Andante



Be-a-ta De-i ge-mitrix Ma-ri-a

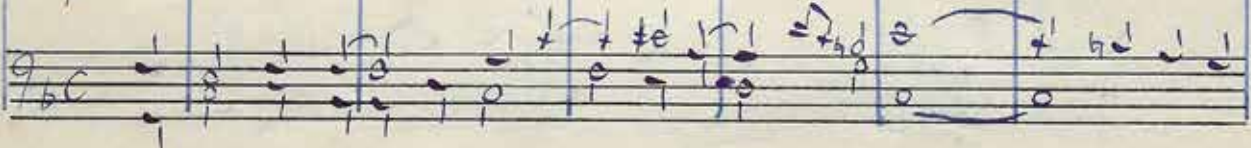


Andante

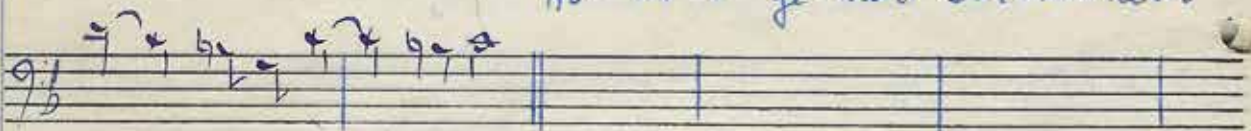
viscera



p



Ho-di-e ge-mit Salva-to-rem



in-taeta per-manent.



(-9-)

Per... ..



rall. *Finis con moto*

sae- - - - culi.

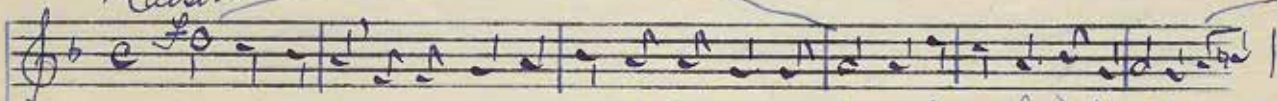
rall. *Finis con moto* *Be-a-ta quae cre-didit: quo-suam per*

Adie gemi

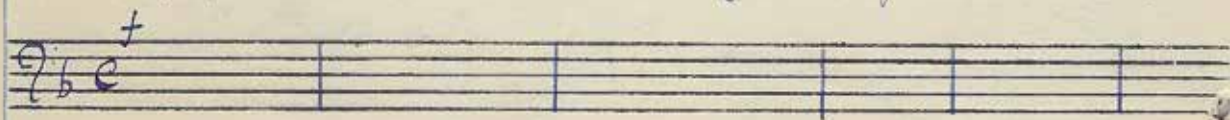
se eta sunt o-mni-a quae dicta sunt e-ia Do-mi-no.

Responso VI

Maestros



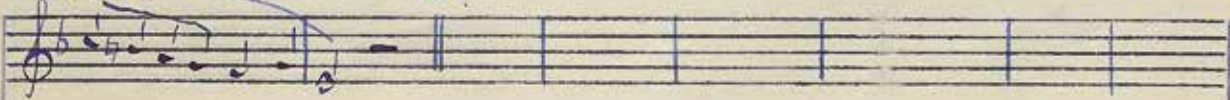
San - cta et i ma - cu - la - ta vir gi ni - tas quibus te laudibus offeram



Maestros



rall.

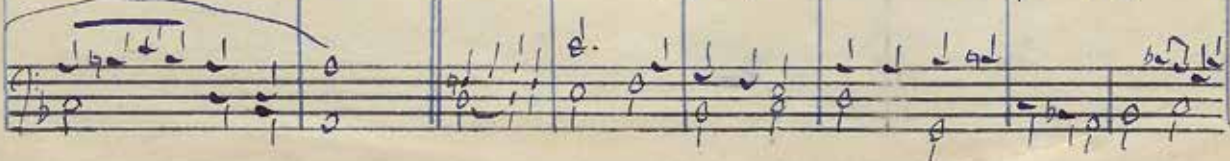


res - sei - o



Qui - a quem coeli capere non po - te rant tu o gre - mi -

rall.



Fine Più lento

Bene dicat in multi-*li* --- *re* et bene-

-o con-*tu*-*li* --- *sti*

rall. Fine Più lento

li et *fructu* *scilicet* *san-* --- *cti*

quia (*Soli*)

San-

cti *Patris* *et* *Filii* *et* *Spiritus* *San-* --- *cti*

Responsoire VIII

Dolce

De-a-ta mi-cer-a Ma-ri-ae Vir-gi-nis
quae pro-fer-tant ac-ti-ori

quae pro-fer-tant ac-ti-ori pa-tri-

Detailed description: This system contains the first two staves of music. The top staff is a vocal line in G major (one flat) and 4/4 time, marked 'Dolce'. It begins with a whole note G4, followed by quarter notes A4, B4, C5, D5, E5, F5, G5, and a half note G5. The bottom staff is a piano accompaniment in the same key and time, starting with a whole note G3, followed by quarter notes A3, B3, C4, D4, E4, F4, G4, and a half note G4. The lyrics are written below the vocal line.

Dolce

p

Detailed description: This system contains the next two staves of music. The top staff continues the vocal line with a whole note G5, followed by quarter notes F5, E5, D5, C5, B4, A4, G4, and a half note G4. The bottom staff continues the piano accompaniment with a whole note G4, followed by quarter notes F4, E4, D4, C4, B3, A3, G3, and a half note G3. A dynamic marking 'p' is placed below the first measure of the vocal line.

Pa-tris Fi-li-um et ge-ni-tum con-si-sten-tem

Detailed description: This system contains the third and fourth staves of music. The top staff continues the vocal line with a whole note G4, followed by quarter notes F4, E4, D4, C4, B3, A3, G3, and a half note G3. The bottom staff continues the piano accompaniment with a whole note G3, followed by quarter notes F3, E3, D3, C3, B2, A2, G2, and a half note G2.

fi-li-um

Detailed description: This system contains the fifth and sixth staves of music. The top staff continues the vocal line with a whole note G3, followed by quarter notes F3, E3, D3, C3, B2, A2, G2, and a half note G2. The bottom staff continues the piano accompaniment with a whole note G2, followed by quarter notes F2, E2, D2, C2, B1, A1, G1, and a half note G1.

Handwritten signature

Handwritten musical notation for the first system. The vocal line is in treble clef with a key signature of two flats (B-flat and E-flat). The lyrics are: *venit christum domini christum do - - - - - mi - - - - - num.* The piano accompaniment is in bass clef with the same key signature. Dynamics include *p* (piano) and *f* (forte). The system concludes with a double bar line.

Handwritten musical notation for the second system. The vocal line continues from the first system. The piano accompaniment features chords and moving lines. The system concludes with a double bar line.

Handwritten musical notation for the third system. The vocal line is in treble clef with a key signature of two flats. The lyrics are: *Qui ho - di - e pro sa - lu - te om - ni - um - di - de Vir - gi - ne na - sci - di -* The piano accompaniment is in bass clef with the same key signature. Time signatures include $3/2$ and $3/4$. The system concludes with a double bar line.

Handwritten musical notation for the fourth system. The vocal line continues from the third system. The piano accompaniment features chords and moving lines. The system concludes with a double bar line.

Finis

gra-tias est

- - - tu est. Di-essanctifica-tus et hinc or- - -

Finis

tu est. Di-essanctifica-tus et hinc or-

Qui Roti

- hinc Venite sen-tes et ado- rate Do- - minum.

Handwritten signature

~~Requiem III~~

Maestoso

Verbum caro fa - ctus est et ha - bitavit in no - bis

Verbum caro fa - ctus est et habitavit in no - bis

Maestoso

Con moto

Et vidimus glo - ri - am e - jus quasi u - ni - geniti - a pleni -

Con moto

Finis

grati-ae et veri-ta-tis Omnia per ipsum facta sunt

grati-ae et veri-ta-tis et si-ne

finis

et si-ne

et si-ne

⊕

et si-ne et pro fa-ctis et mi-ri-bil-ibus quod vidimus

et si-ne et pro fa-ctis et mi-ri-bil-ibus quod vidimus

pro fa-ctis et mi-ri-bil-ibus quod vidimus

pro fa-ctis et mi-ri-bil-ibus quod vidimus

Handwritten signature or name in the top right corner.

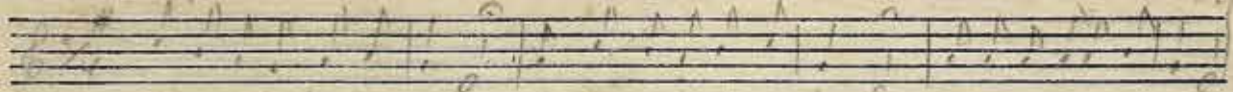
* *et spiri-tui Sancto et*

Teu

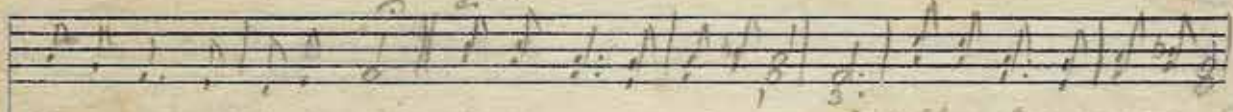
glo-ri-a Pa-tri et fi-li-o et spi-ri-tui sancto

Handwritten text, possibly a title or date, including '1960' and 'Catal'.

... e o primeiro ...
 ... de ...
 ... e o primeiro ...



É o que bela primavera Que bela, são tuas, flores! E tudo é a primavera

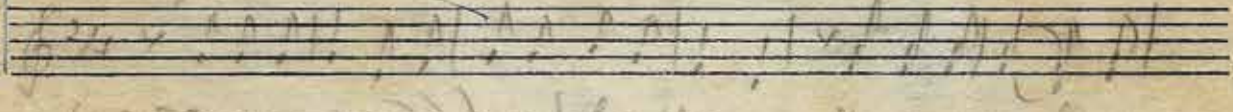


Principalmente em ... flores, ...



Principalmente em ...

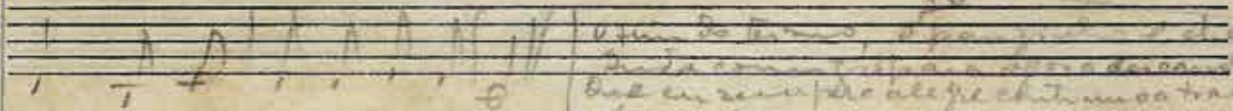
Segue



... e o primeiro ...

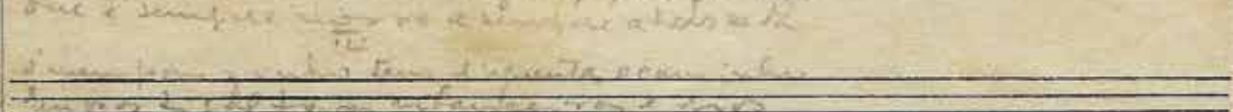
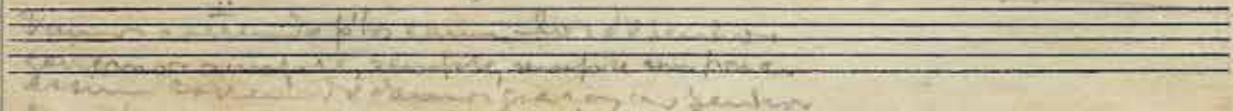


... e o primeiro ...



... e o primeiro ...

... e o primeiro ...



Parece sempre até ao termo chegar.